

Installing Adobe® Illustrator® Extensions. Standalone Installer for Mac OS X

Last update: June 2016

© 2013 63mutants. All rights reserved.

63mutants.com

1	Extensions.....	3
2	About the Installer.app.....	3
3	Installation	3

1 Extensions

An extension is a piece of software that can be added to an Adobe® application to enhance its capabilities.

2 About the Installer.app

Installer is an application included in OS X that extracts and installs files out of *.pkg/*.mpkg packages. Its purpose is to help software developers create uniform software installers.

3 Before you start

Please make sure that you have removed all previous versions of the extension. Remove the following folders:

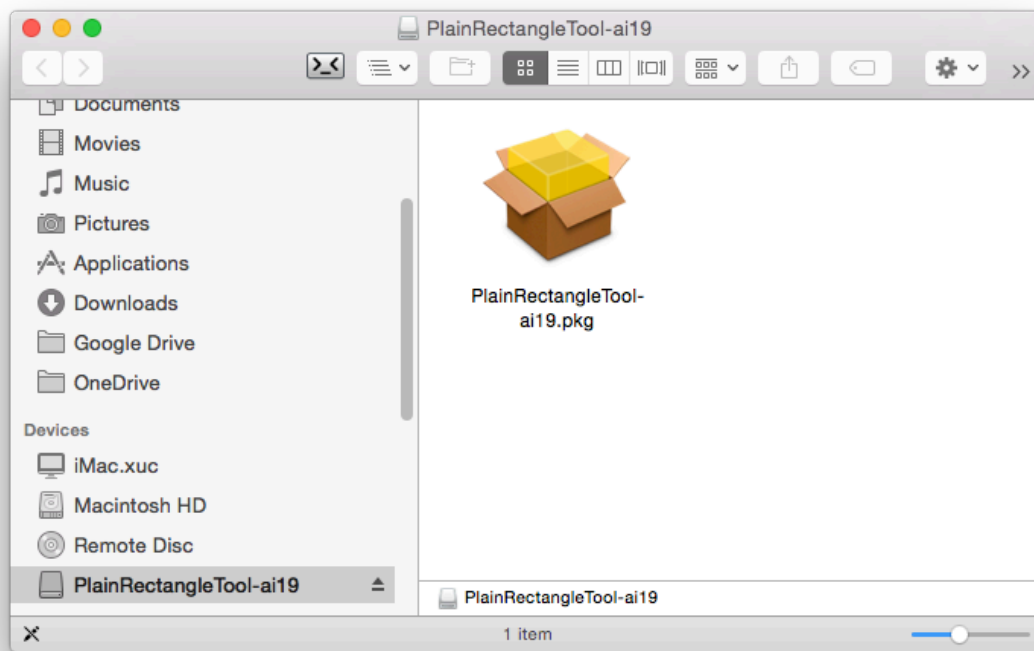
```
/Applications/Adobe Illustrator CC 2015/Plug-ins/ObliqueProjection  
/Applications/Adobe Illustrator CC 2015/Plug-ins/com.63mutants.ObliqueProjection  
/Applications/Adobe Illustrator CC 2015.3/Plug-ins/ObliqueProjection  
/Applications/Adobe Illustrator CC 2015.3/Plug-ins/com.63mutants.ObliqueProjection  
/Library/Application Support/Adobe/CEP/extensions/ObliqueProjection  
/Library/Application Support/Adobe/CEP/extensions/com.63mutants.ObliqueProjection
```

4 Installation

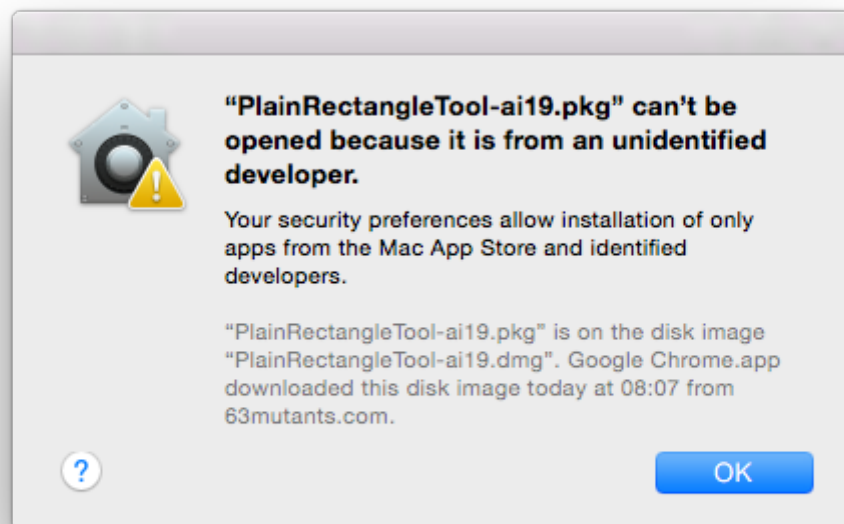
Make sure that the Adobe® Illustrator® application is not running. Double click on the downloaded *.dmg file and follow the onscreen instructions:



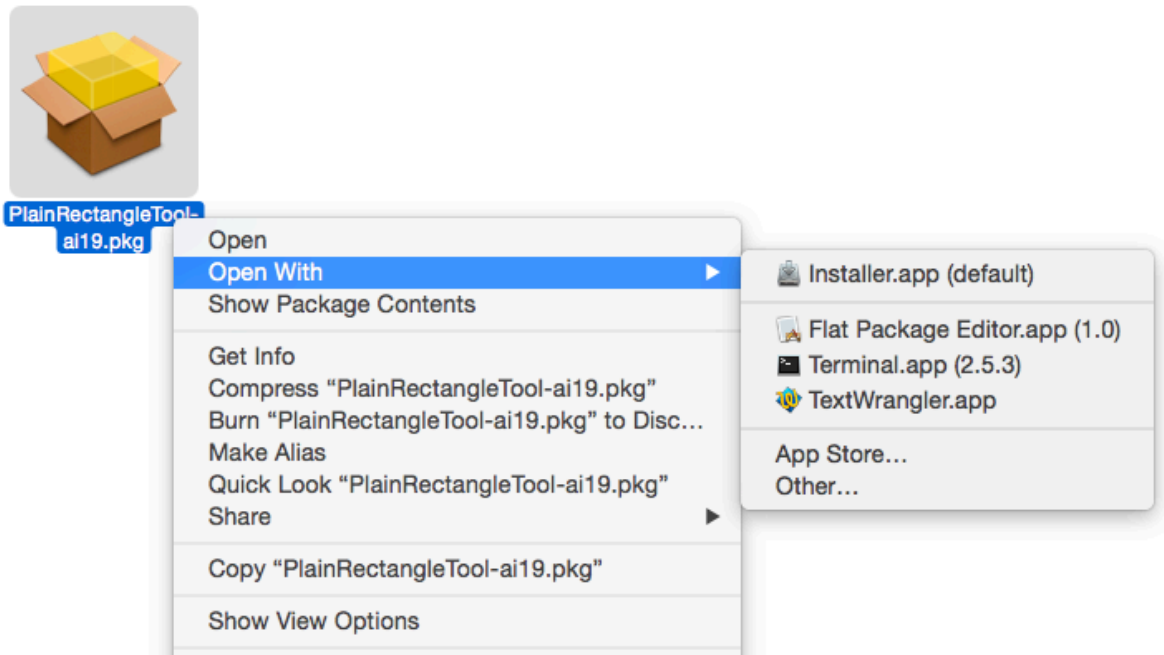
The following window should appear:



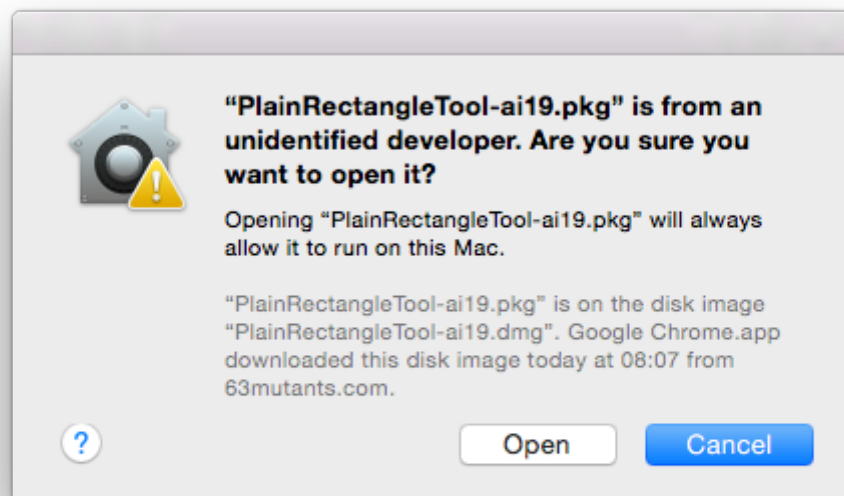
Now, double click on the *.pkg/*.mpkg file. Note: A warning message may appear that you are trying to install an application from an unidentified developer. Like this:



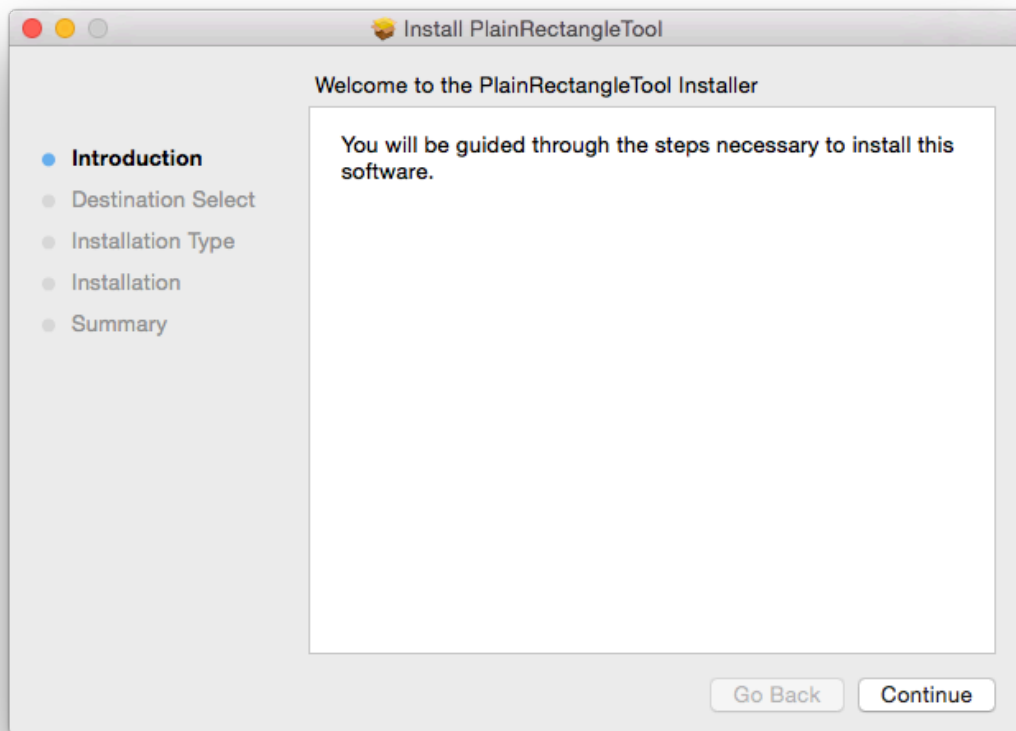
If so, hit *OK* to close the window. Go back to the *.pkg/*.mpkg file, right-click on it and choose *Open With > Installer.app*:



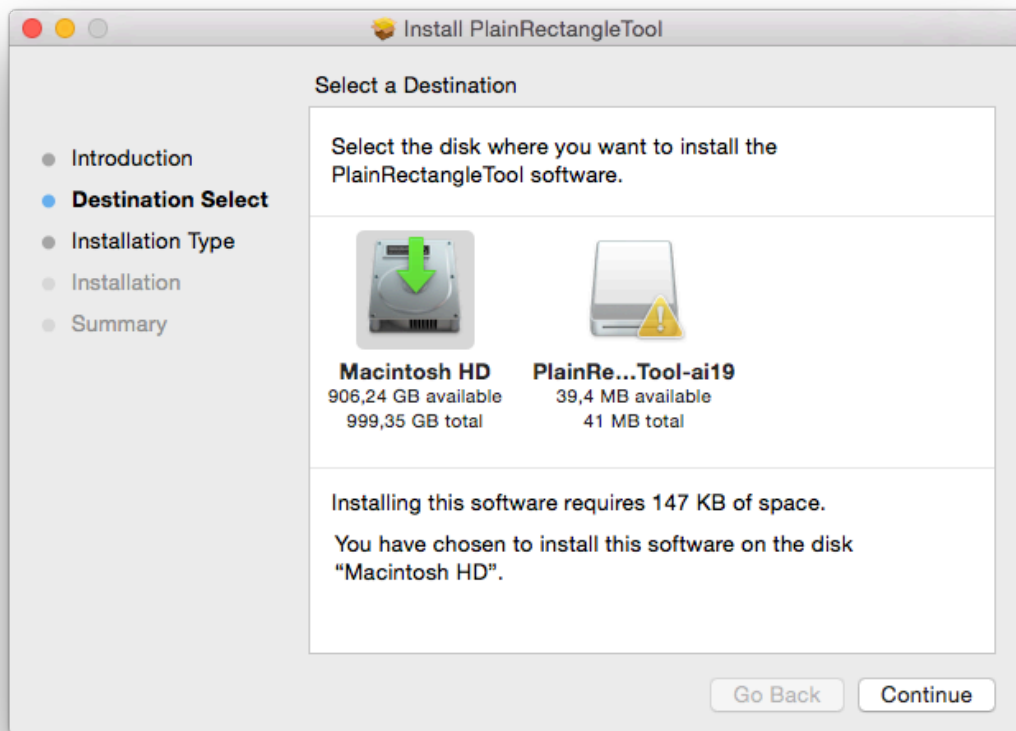
The warning message pops up again but now you can choose to open the file. Hit *Open*:



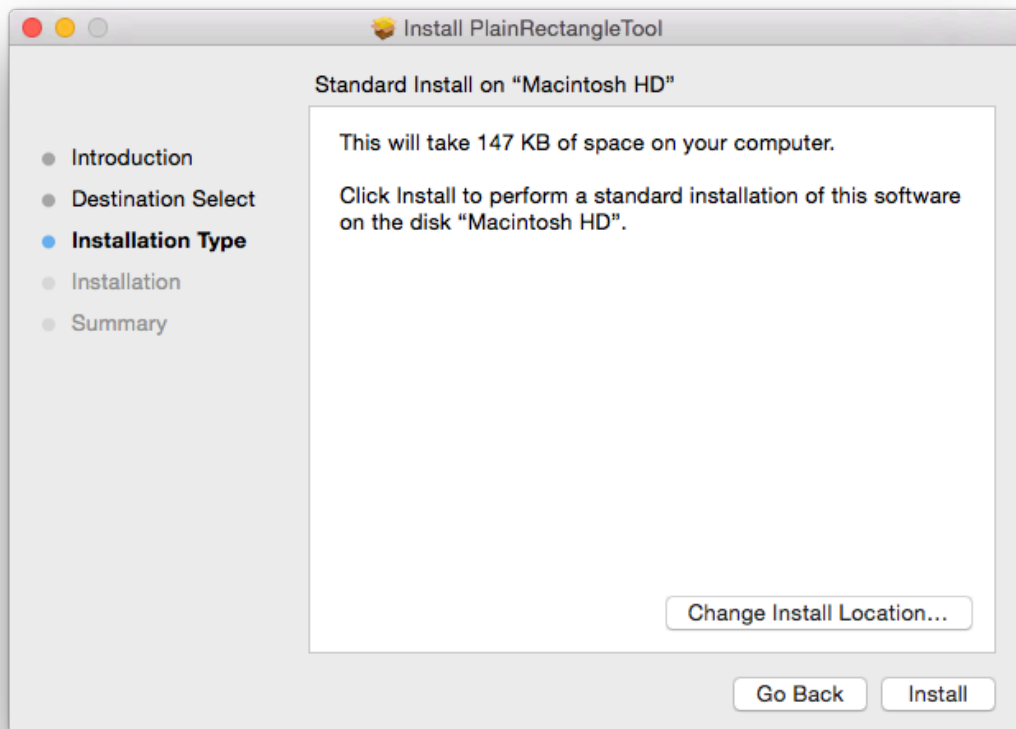
The Welcome Screen should appear:



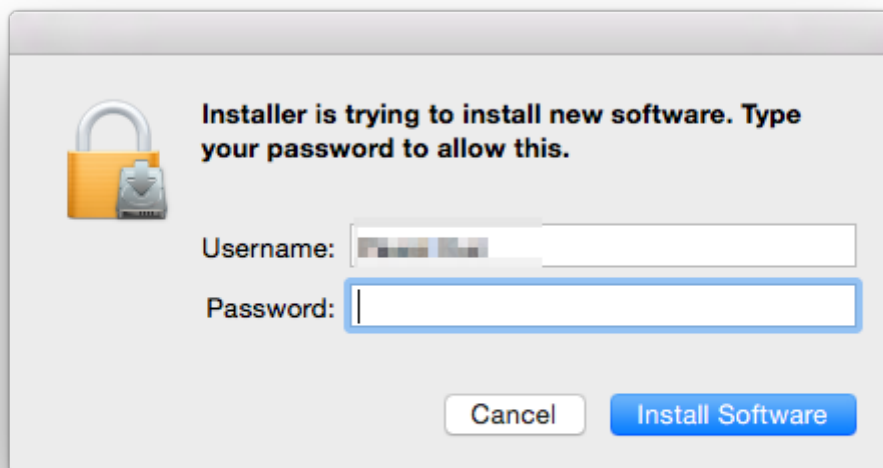
Hit *Continue* and select *Destination*. This should be the Drive where you have your Adobe® Illustrator® application Installed. By default it is *Macintosh HD*:

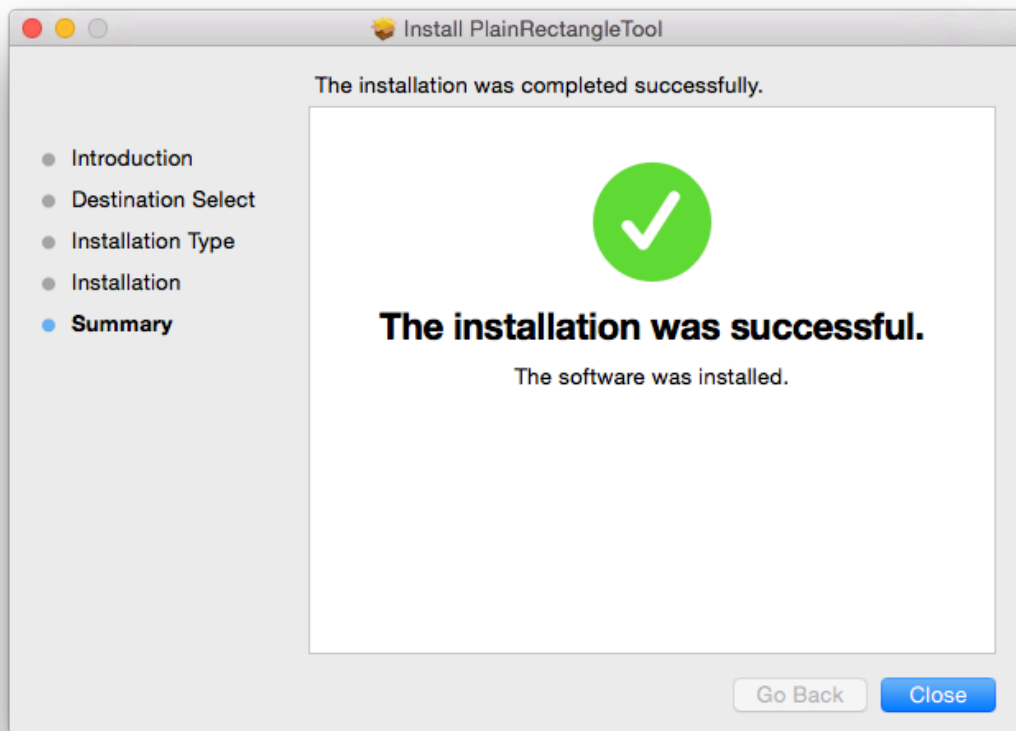


Select *Continue*:

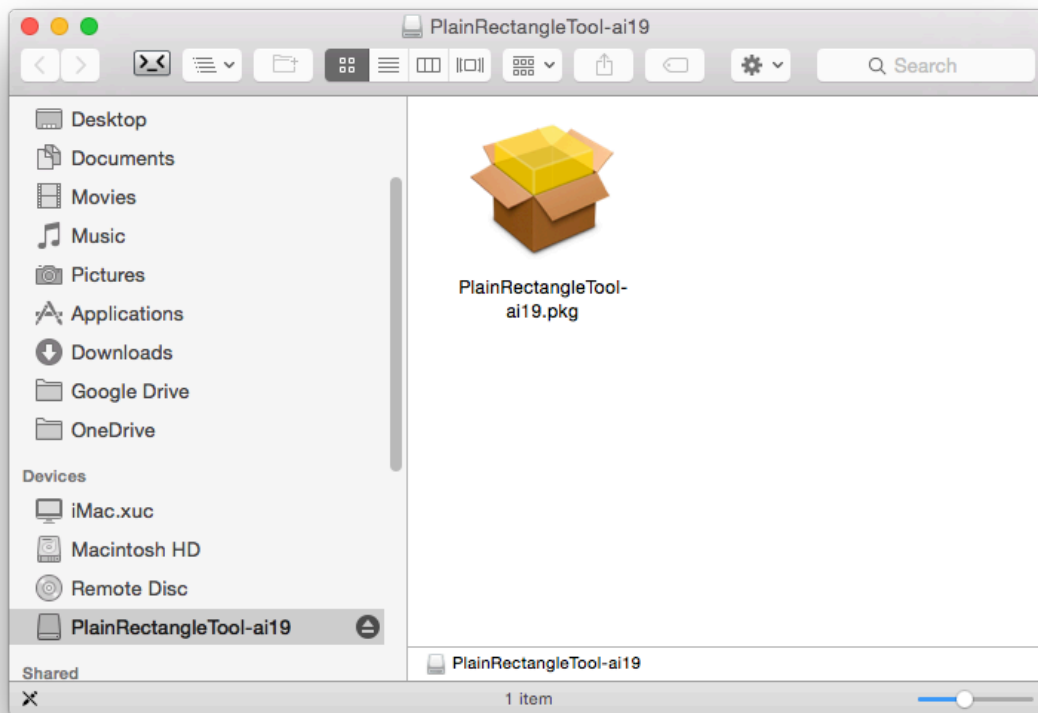


And *Install*. The installer asks you for password to allow to install this new software:





The installation was successful. Hit *Close*. You can now *Eject* the *plug-in* drive:



Your Plug-In has been installed. You can now launch the Adobe® Illustrator® > go to Window > Extension. Your tool is there!

