

Using *Adobe*[®] *Illustrator*[®]: How to Add Typographically Correct Stroke to Your Type

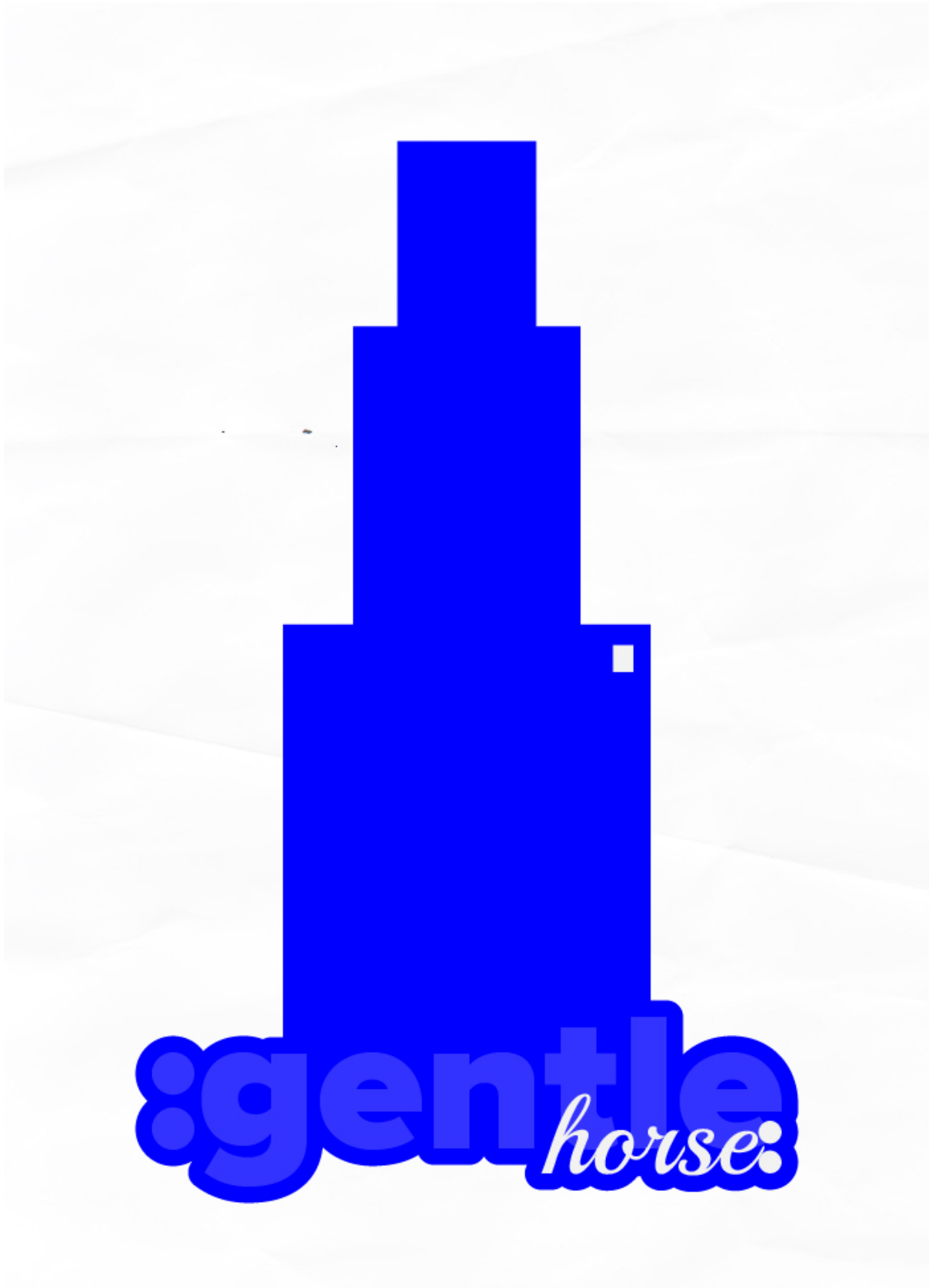
Last update: October 2014

© 2013 63mutants. All rights reserved.

63mutants.com

1	Final Product Overview	3
2	Introduction	4
3	Software.....	4
4	New Document.....	5
5	Letters.....	5
6	Style And Color Appearance	6
7	Apply Strokes to your Type.....	7
8	Modifying the Text Content	10
9	The final effect preview	12

1 Final Product Overview



2 Software

a) Adobe® Illustrator® CS6 or CC:

<http://www.adobe.com/products/illustrator.html?promoid=KAUCB>

3 Introduction

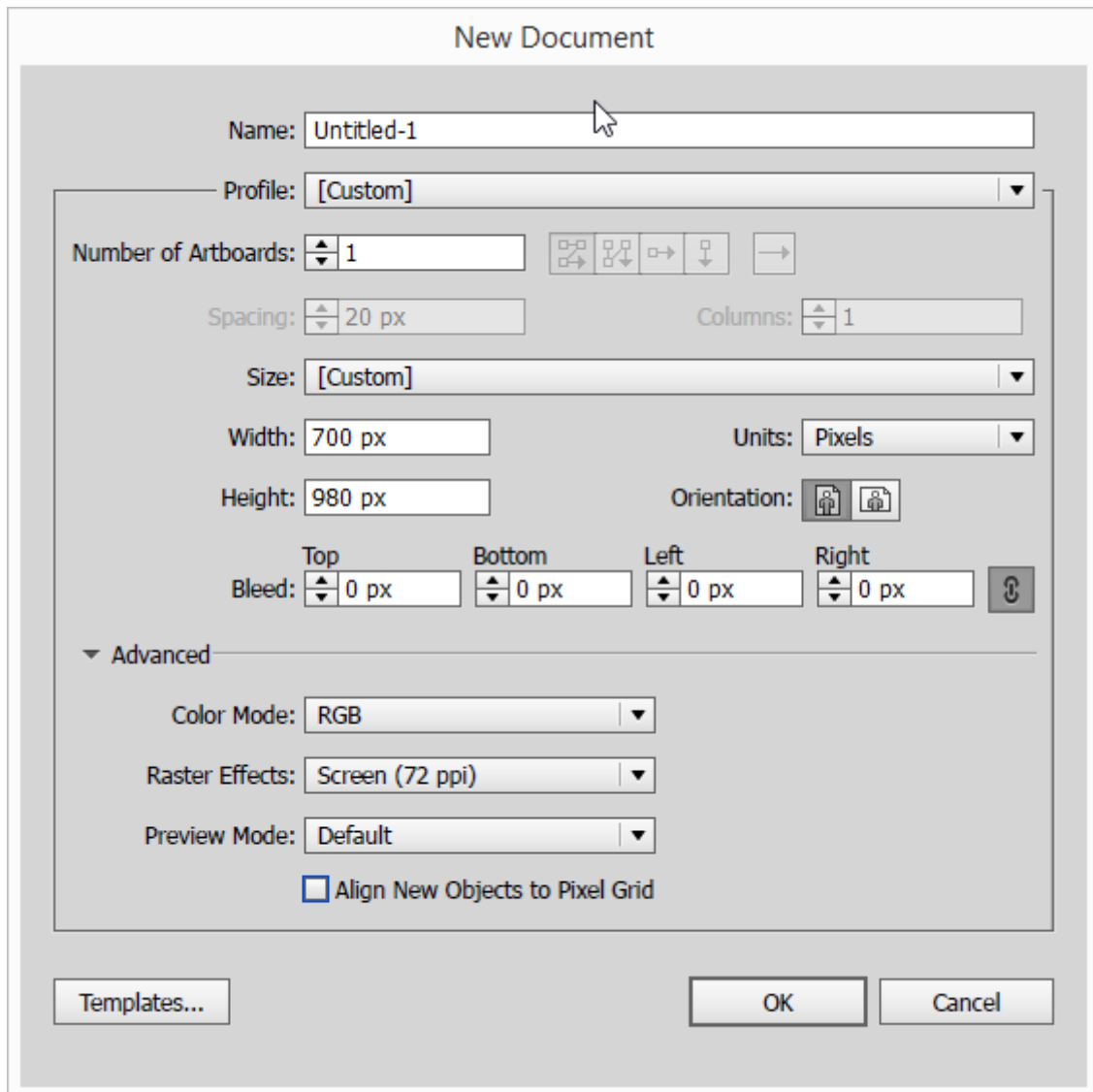
This quick tutorial shows you how to add typographically correct strokes to your Type avoiding stacking problems. If you ever added strokes to your Type in Adobe® Illustrator® you know that it just doesn't look good:



Even a normal weight stroke covers the letter forms making it look absolutely awful! Is there anything we can do about it? Yes - take a look at these few easy steps.

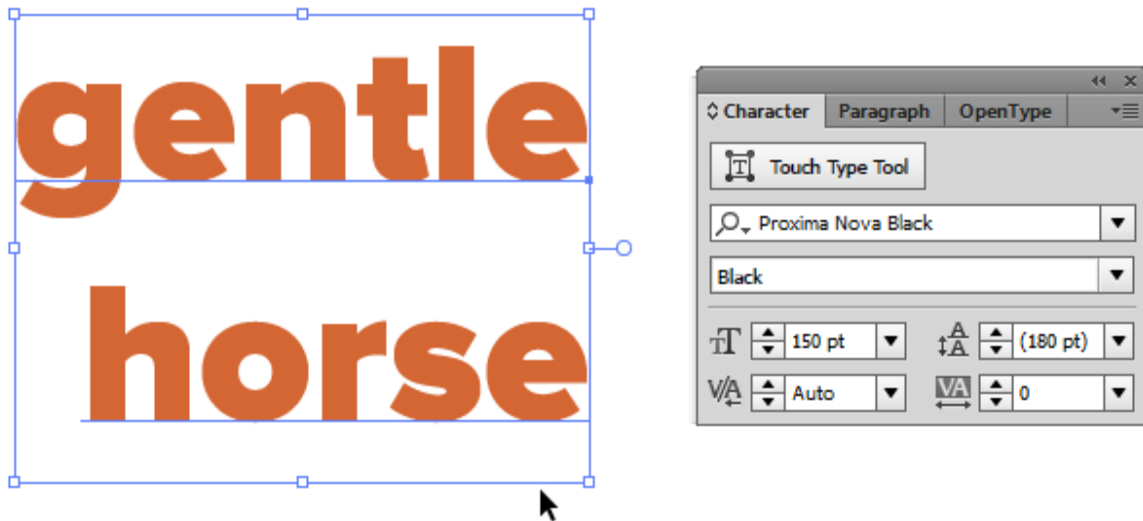
4 New Document

Launch Adobe® Illustrator® and start with the new document, let's say 700 x 980 px, units: Pixels, RGB color model, 72ppi:



5 Letters

Start with Type Tool. Insert a simple, two line text. I use *Proxima Nova Black* Font, 150pt height.



6 Style and Color Appearance

I will modify the second line text style applying for example *PlayBall* font, 81.25pt height.

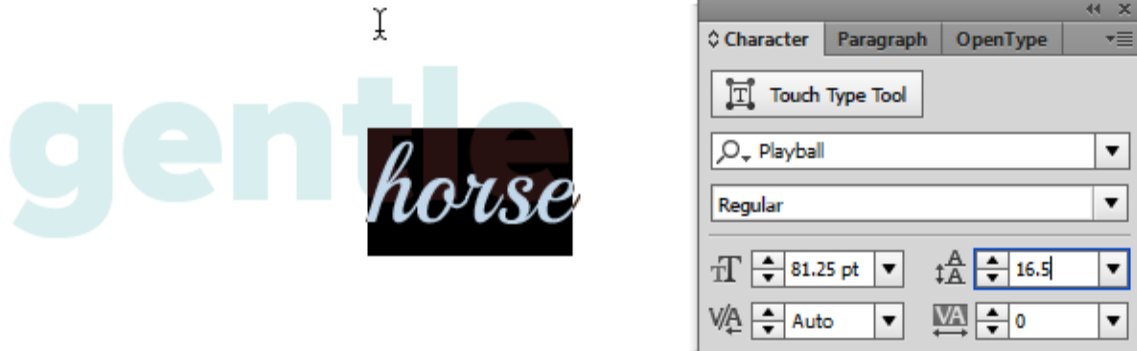


Of course I can even apply different color appearance to my letter lines, like this:



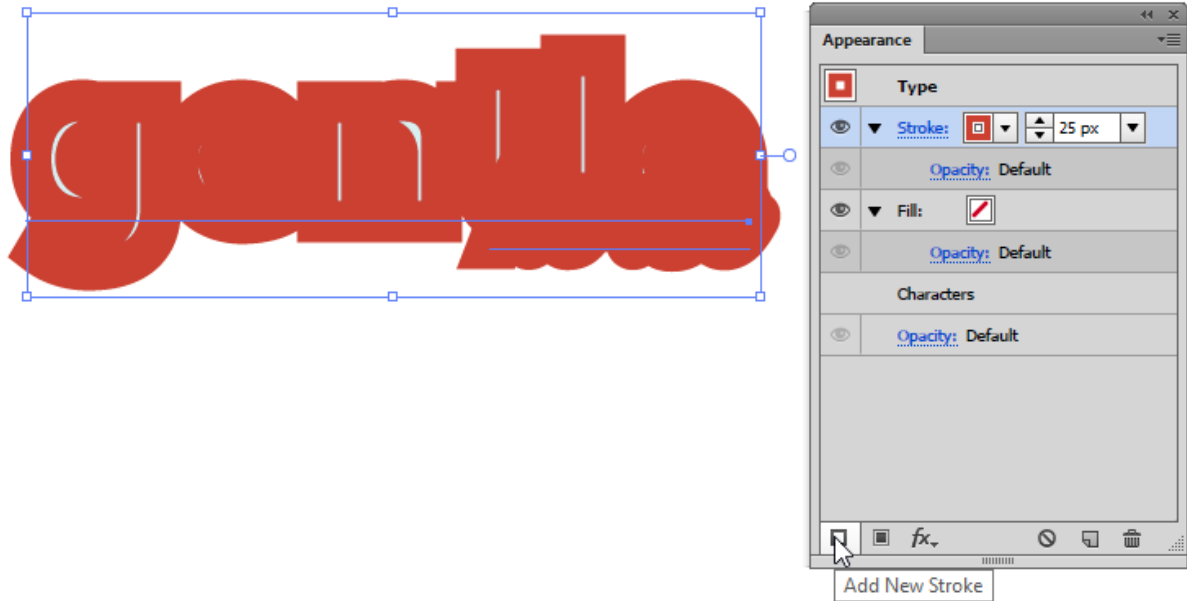
7 Characters leading

To make it more like one assembly text we will change the *Leading* parameter as well. Just select the second line of text, go to *Character* panel and type 16.5pt

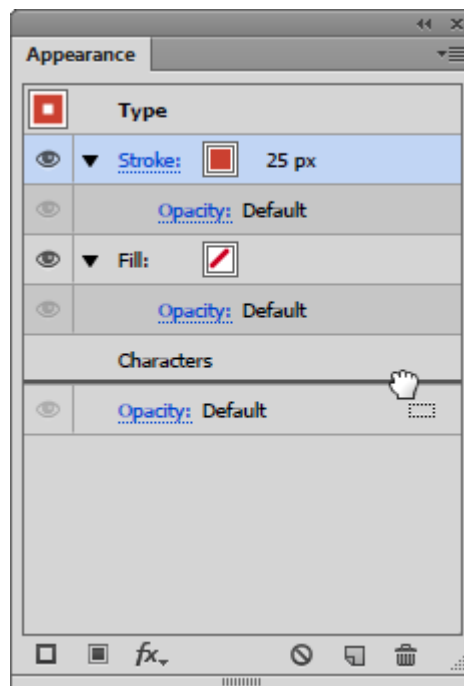


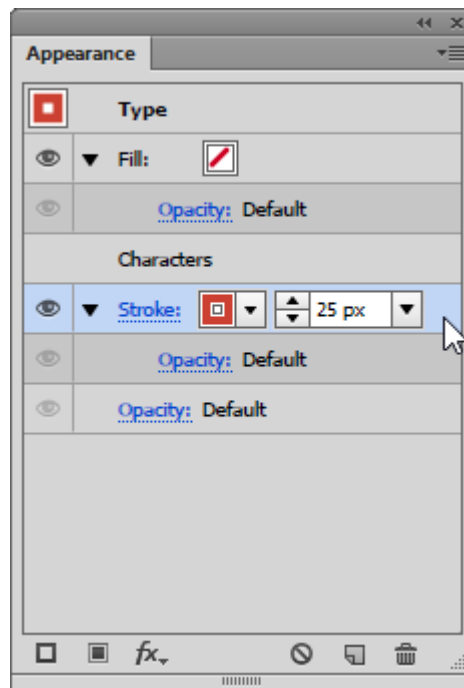
8 Apply Strokes to your Type

The letter forms are ready – let's start with the *Stroke*. Go to *Appearance* panel, hit *Add New Stroke* button and change its weight to 25px.

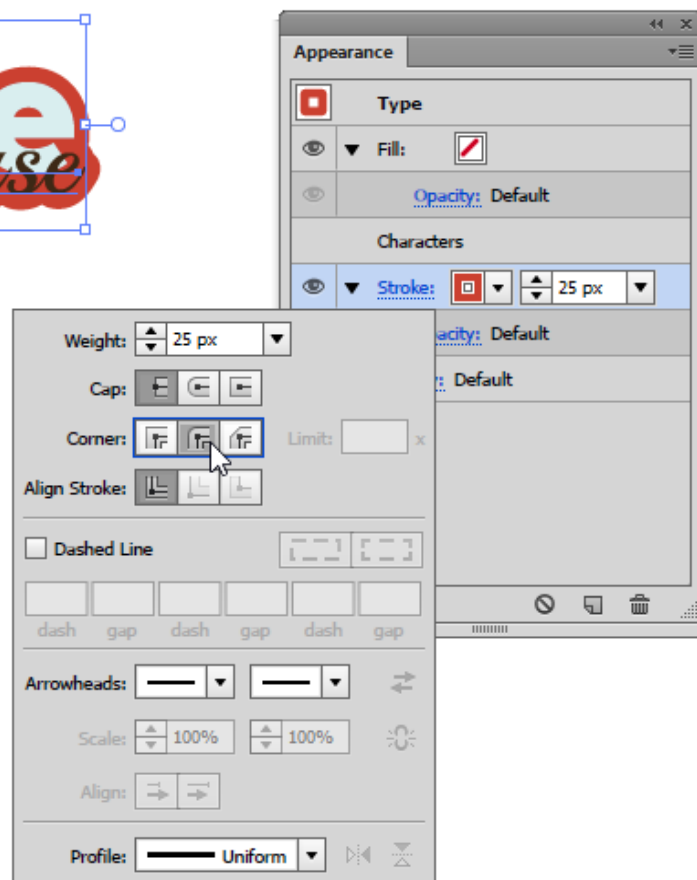


It doesn't look good. So now, drag the *Stroke* entry and drop it below the *Characters*.





And that's it! The *Stroke* effect is ready and looks great! One more thing: click on the *Stroke* link and change its corner type to *Round Join*. The result should be like this:



9 Modifying the Text Content

Note that we are still working with the fully functional *Type Object*. Any modification to its content is still possible. We can change anything inside our *Type* and Adobe® Illustrator® will recalculate the whole structure fully automatically. Take a look at these examples:

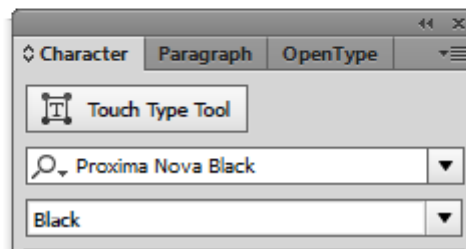
A type object containing the text ':gentle' in a light blue, rounded, sans-serif font with a thick red outline. To its right, the word 'horse' is written in a black, cursive script font. A vertical line is positioned at the start of the 'gentle' text, and a text cursor is located below the 'e' in 'gentle'.

A type object containing the text ':G=gentle' in a light blue, rounded, sans-serif font with a thick red outline. To its right, the word 'horse' is written in a black, cursive script font. A text cursor is located below the 'e' in 'gentle'.

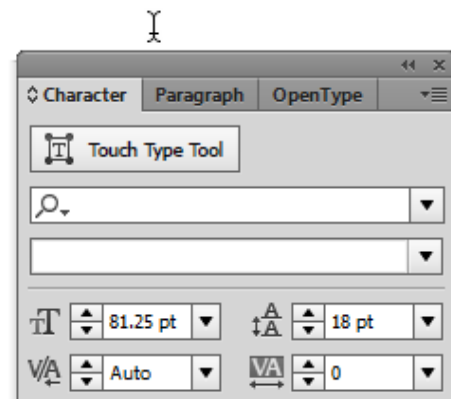
A type object containing the text ':gentle' in a light blue, rounded, sans-serif font with a thick red outline. Overlaid on it is the text 'Zupahorse:' in a black, cursive script font. A text cursor is located above the 'h' in 'Zupahorse:'.

A type object containing the text ':gentle' in a light blue, rounded, sans-serif font with a thick red outline. To its right, the text 'horse:' is written in a black, cursive script font. A text cursor is located below the 'e' in 'horse:'.

Obviously we can also modify the *Font Style* of our letters. I will select just the colon character and modify its *Style* to *Proxima Nova Black*:



I can also modify other attributes, like for example *Leading*. I will adjust the second line a little bit by selecting the *horse* line and entering 18pt in the *Character* panel:



10 The final effect preview

OK. Our *:gentle horse:* typography is ready. This was simple like ABC! And we still have it in the *Type* form - so any further modification will be really smooth.



■